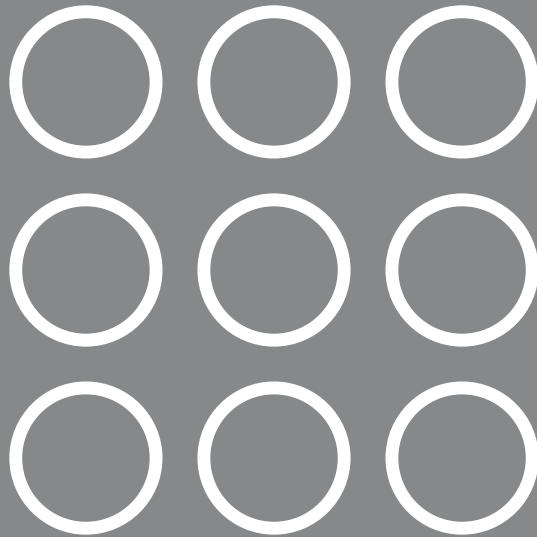


# SPECIAL PATTERNS · AC · RRF



S

T

U

D

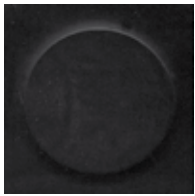
W

A

Y

# SPECIAL PATTERNS

Piastrelle monocolori con rilievi.  
Solid colour studded tiles.



**BMS**

610x610 mm | ø 29 mm | 9,4 mm | 2,1 mm | 2,5 mm | kg/m<sup>2</sup> 3,70



Colori  
Black



**BA**

1000x1000 mm | ø 20 mm | 2,0 mm | 2,0 mm | 4,0 mm | kg/m<sup>2</sup> 5,40

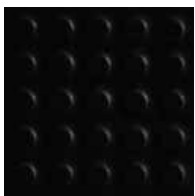
1000x1000 mm | ø 20 mm | 2,0 mm | 4,0 mm | 6,0 mm | kg/m<sup>2</sup> 8,10



Colori  
EN 21



36  
80



**MINI PASTILLE**

Piastrelle con superficie a mini bolli.  
Rubberfloor in tiles with small studded surface.

1000x1000 mm | ø 4 mm | 0,4 mm | 2,6 mm | 3,0 mm | kg/m<sup>2</sup> 4,00



Colori  
EN 21



**R**

1000x1000 mm | 15 mm | 2,0 mm | 3,0 mm | 5,0 mm | kg/m<sup>2</sup> 6,50



Colori  
EN 21



# AC

Piastrelle monocolori con rilievi a bolli. Per posa con attacco cemento.  
*Solid colour round studded tiles. Cement bonding laying.*



BA

1000x1000 mm |  | 2,0 mm | 8,0 mm | 10,0 mm |  kg/m<sup>2</sup> 9,50

CE  
EN 14041



Colori standard  
EN 21



BP

1000x1000 mm |  | 1,5 mm | 8,0 mm | 9,5 mm |  kg/m<sup>2</sup> 8,30

CE  
EN 14041



Colori standard  
EN 21



RD

1000x1000 mm |  | 2,0 mm | 8,0 mm | 10,0 mm |  kg/m<sup>2</sup> 9,10

CE  
EN 14041

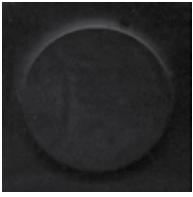


Colori standard  
EN 21



# RRF

Usi industriali e trasporti.  
*Industrial uses for Transport.*



## RRF - BB

Pavimento in rotoli con superficie a rilievo con bollo basso.  
*Low stud flooring in rolls for heavy traffic.*

1,0x10 m |  $\varnothing$  24 mm |  $\begin{matrix} 0,6 \text{ mm} \\ 2,1 \text{ mm} \end{matrix}$  | 2,7 mm | kg/m<sup>2</sup> 3,80



Colori standard

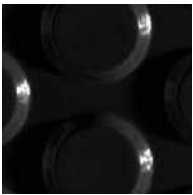
EN 21

EG 06

EG 04



38  
80



## RRF - BAS

Pavimento in rotoli con superficie a rilievo con bollo alto.  
*High stud flooring in rolls for heavy traffic.*

1,20x10 m |  $\varnothing$  14 mm |  $\begin{matrix} 2,0 \text{ mm} \\ 2,0 \text{ mm} \end{matrix}$  | 4,0 mm | kg/m<sup>2</sup> 4,80



Colori standard

EN 21

EG 06



## RRF - BMN

Pavimento in rotoli con superficie a rilievo con bollo basso.  
*Low stud flooring in rolls for heavy traffic.*

1,45x15 m |  $\varnothing$  28 mm |  $\begin{matrix} 0,5 \text{ mm} \\ 2,5 \text{ mm} \end{matrix}$  | 3,0 mm | kg/m<sup>2</sup> 4,00



Colori standard

Black

Grey





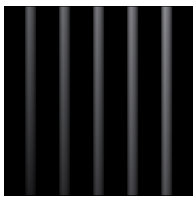
### RRF - LISCIO

Pavimento in rotoli con superficie liscia in tinta unita per traffico intenso.  
*Rubberfloor in rolls with smooth surface.*

1,25x15 m | 3,0 mm | kg/m<sup>2</sup> 5,10



Colori standard  
Black Grey



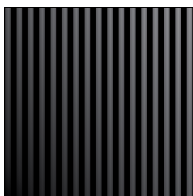
### RRF - 100 RIGHE

Pavimento in rotoli con superficie rigata fine per aree a traffico intenso.  
*Rubberfloor in rolls with ribbed surface.*

1,25x15 m | 3,0 mm | kg/m<sup>2</sup> 4,10



Colori standard  
Black Grey



### RRF - 1000 RIGHE

Pavimento in rotoli con superficie rigata molto fine per aree a traffico intenso.  
*Rubberfloor in rolls with fine ribbed surface.*

1,25x15 m | 3,0 mm | kg/m<sup>2</sup> 4,00



Colori standard  
Black Grey



# Studway

			BB	BAS	LISCIO	100 R	1000 R	BMN	MINI PASTILLE
Proprietà secondo EN 14 041/EN 12 199/EN 1817 Properties according to EN 14 041/EN 12 199/EN 1817	Norma di prova Test method	U.m. & Requisiti U.m. & Requirements	Valori medi risultati da collaudi della produzione in corso Average test results from running production						
Durezza Hardness	UNI EN ISO 7619-1	≥ 70 Shore A	85	≥ 75					
Resistenza all'abrasione a 5 N di carico Abrasion resistance at 5 N load	ISO 4649 Procedura A Procedure A	≤ 250 mm <sup>3</sup>	180 mm <sup>3</sup>	< 250 mm <sup>3</sup>					< 180 mm <sup>3</sup>
Impronta residua Residual indentation	UNI EN ISO 24343 (Ex. EN 433)	Valore medio ≤ 0,20 mm	0,10 mm	≤ 0,20 mm					
Stabilità dimensionale Dimensional stability	UNI EN ISO 23999 (Ex. EN 434)	± 0,4%	± 0,3%						
Flessibilità Flexibility	UNI EN ISO 24344 (Ex. EN 435 Procedura A - Procedure A)	Diametro del mandrino 20 mm nessuna formazione di fessura Mandrel diameter 20 mm no fissuring	Conforme Fulfilled						
Solidità dei colori alla luce artificiale Colour fastness to artificial light	ISO 105-B02 Procedura 3 Procedure 3	Almeno 6 sulla scala del blu; ≥ livello 3 sulla scala del grigio (= 350 MJ/m <sup>2</sup> ) At least level 6 on the blue scale; ≥ level 3 on the grey scale (= 350 MJ/m <sup>2</sup> )	Conforme Fulfilled						
Resistenza alla brace di sigaretta Cigarette-burn resistance	EN 1399 Procedura A - B Procedure A - B	Procedura A (espulso) ≥ livello 4 Procedura B (in fiamme) ≥ livello 3 Procedura A (stubbed out) level ≥ 4 Procedura B (burning) level ≥ 3	Conforme Fulfilled						
Classe antincendio Reaction to fire	EN 13 501 - 1	Classe Class	Cfl - s1	Bfl - s1					
Resistenza allo scivolamento Slip resistance	EN 13 893	≥ 0,30 DS	DS						
Reazione alle sostanze chimiche Effect of chemicals	UNI EN ISO 26987 (Ex. EN 423)	-	Dipende dalla concentrazione e dal tempo d'azione Resistant depending on concentration and time of exposure						
Proprietà elettro-isolante Electrical insulation properties	EN 1021 META	Ohm	> 10 <sup>10</sup> Ohm						
Carica elettrostatica da calpestio Electrical propensity when walked upon	EN 1815	kV	Antistatico, carica elettrostatica in caso di soles in gomma ≤ 2kV Antistatic - charging in case of rubber soles ≤ 2kV						
Fattore di correzione del rumore da calpestio Improvement in footfall sound absorption	UNI EN ISO 10140-3 (Ex. ISO 140 - 8)	dB	Fino a 10 dB						
Effetto sedia a rotelle Effect of a castor chair	EN 425	-	Prova di rulli, tipoW, conformi alla norma EN 12529 Suitable if castor wheels, typeW, according to EN 12529 are used						

I DATI TECNICI POSSONO ESSERE SOGGETTI A MODIFICHE SENZA PREAVVISO  
TECHNICAL DATA ARE SUBJECT TO CHANGE WITHOUT NOTICE